

SENIOR HEALTHCARE SUPPORT WORKER

# THEATRE SUPPORT APPRENTICESHIP LEVEL 3

## WHY YOU?

Theatre Support Workers look after people before, during and after operations. In most instances your supervisor will be a registered theatre nurse or an operating department practitioner. You will support people as they are preparing to go into theatre, reassuring them if they are anxious, and helping them move them back to recovery following their procedure. You will support the team that carries out the operations by carrying out a range of checks, such as checking individuals into the theatre department, preparing equipment, counting swabs or other instruments and measuring fluids. You may be involved in routine operations or traumatic and emergency surgery.

**DURATION:** 18 months

**ENTRY REQUIREMENTS:** Health and Social Care experience and a minimum of two GCSE at grade 4 (grade C) or above in Maths and English is desirable. Functional Skills can be obtained on the course.

**TRAINING LOCATION:** Training 2000 Blackburn OR your employers location (depending on cohort size)

**JOB ROLES INCLUDE:** Senior Healthcare Support Worker, Therapy Support Worker, Mental Health Support Worker, Healthcare Assistant, Maternity Support Worker, Theatre Support Worker, Paediatric Support Worker.

### OUR OFFER INCLUDES:

- Continuous training during programme
- Regular reviews with the apprentice and the employer
- Support when the apprentice is ready to undertake the End Point Assessment (EPA)

### EMPLOYER BENEFITS:

- Highly skilled employees with globally recognised qualifications
- Engaged, knowledgeable and driven employees
- Regular reviews for behaviour, development and welfare of the learner
- Motivated, challenged and engaged learners, linking knowledge to their job roles
- Staff working to the highest level of ability

### LEARNER BENEFITS:

- Enhanced skills and knowledge
- A key qualification
- Excellent career advice and guidance
- Progression pathway to Higher / Degree Apprenticeships and highly skilled roles within Health and Social Care
- An increase in potential earnings, working whilst studying

01254 54659 or email [info@t2000.co.uk](mailto:info@t2000.co.uk)

[www.training2000.co.uk](http://www.training2000.co.uk)

 Twitter @training2000  Like us on Facebook  Find us on LinkedIn



Part of the  
University of  
Central Lancashire



## COURSE DETAILS

It comprises of a Level 3 Standard including a Level 3 Diploma in Healthcare Support followed by the end-point assessment (EPA).

### VALUES

You will be caring and compassionate, honest, conscientious and committed.

### BEHAVIOURS

You will treat people with dignity, respecting individual's diversity, beliefs, culture, needs, values, privacy and preferences, show respect and empathy for those you work with, have the courage to challenge areas of concern and work to best practice, be adaptable, reliable and consistent, show discretion, show resilience and self-awareness and show supervisory leadership.

### ASSIST HEALTHCARE PRACTITIONERS WITH DELEGATED CLINICAL TASKS

#### YOU WILL BE ABLE TO:

- provide support to the surgical team when preparing and delivering operative and invasive procedures; perform the non-scrubbed circulating role; position individuals
- complete pre and post-operative checklists
- take part in team briefing, patient sign in, timeout, sign out and debriefing
- undertake a range of physiological measurements on adults, babies or children using the appropriate equipment
- measure and record an individual's body fluid balance
- prepare the clinical environment, provide support for pre and post-operative anaesthesia and recovery
- assist in receiving, handling and dispatching clinical specimens or blood products
- support end of life care and care of the deceased

#### YOU WILL KNOW AND UNDERSTAND:

- factors that affect the choice of site for the attachment of surgical instruments; how to use skin preparation agents and surgical drapes; ways to position individuals for surgery
- pre and post-operative checks including: identification,

operation site marking and pregnancy; the steps for safer surgery

- the theatre team, its protocols and how it fits within the organisational structure
- the range of physiological states that can be measured including body temperature, blood pressure, pulse, urinary output, breathing rate and oxygen saturation and how anaesthesia may affect them; advocacy for the unconscious and conscious patient; chaperoning; how surgery may impact on an individual's mental capacity
- the purpose for recording an individual's body fluid; factors that affect input and output and wound drainage
- potential hazards; how to report issues; common adverse reactions to anaesthesia; how to report deviations from normal; standard precautions for infection prevention and control: ways to avoid compromising and actions to take when there is a breakdown in the sterile field
- types and uses of containers and transport, procedures for labelling, handling, dispatching recording and reporting for clinical specimens and blood products
- how different beliefs and cultures may affect pre and post-operative surgery, including disposal of body parts and preparation for planned surgery and the organ donor process; the end of life phase and factors which impact on the care of the dying or deceased

### SUPPORT INDIVIDUALS

- act as an advocate for the unconscious and conscious patient who could be a baby, child or adult; provide reassurance before, during and after surgery
- transport individuals, checking correct documentation goes with them and that any equipment used is cleaned and returned

- ways to keep the individual informed of what is happening, why and who is involved; verbal and non-verbal indicators to determine an individual's ability to move independently; the effects of pre-medication and anaesthesia
- safe moving and handling techniques that maintain an individual's privacy and dignity

### EQUIPMENT AND RESOURCES

- prepare and provide surgical instrumentation and supplementary items for the surgical team
- carry out counts for swabs, sharps, instrument and disposable items
- the types, purpose and function of surgical instruments and supplementary items used in theatre

- how to identify, measure, account for and record items and sharps used; local policy and procedure for instrument counts and what to do if a swab, sharp, instrument or other disposable item is missing; cost implications of how items used during surgery and surgery time may influence the overall commissioning of surgical procedures

01254 54659 or email [info@t2000.co.uk](mailto:info@t2000.co.uk)

[www.training2000.co.uk](http://www.training2000.co.uk)

 Twitter @training2000  Like us on Facebook  Find us on LinkedIn



Part of the  
University of  
Central Lancashire



## END-POINT ASSESSMENT

The end-point assessment has three components which have been designed to be completed once the apprentice has finished the on-programme learner journey. All three components will need to be passed in order for the apprentice to be awarded the Apprenticeship.

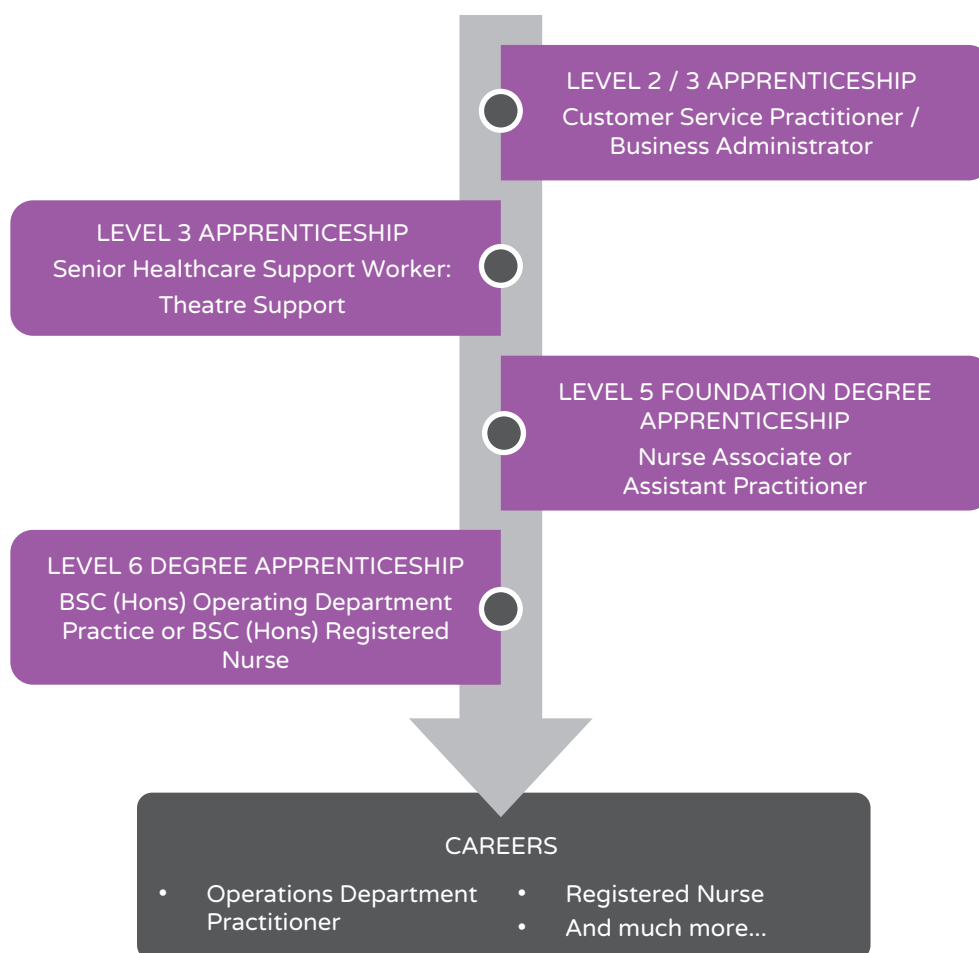
Apprentices will be expected to complete:

1. A multiple choice test that is divided into two parts. Part A covers the core knowledge involved and Part B covers the option-specific knowledge included.
2. The observation of practice is undertaken in the apprentice's workplace to assess skills and behaviours highlighted. A question and answer session will be used for skills and behaviours not fully seen during the observation period.
3. The professional discussion will assess the apprentice's knowledge, skills, values and behaviours in practice. The apprentice will collate a portfolio which they will use to underpin the professional discussion.

**Judgement on whether the apprentice is ready for the end-point assessment is taken by the employer**, who should gather views from the training provider and the apprentice to inform this decision. Apprentices should not be put forward for the end-point assessment before they are ready.

## YOUR APPRENTICESHIP CAREER PATH

Below is an example career path showing how you can progress up to a Level 6 qualification. At the end of every qualification you have the option to leave your education and progress with your career - you don't need to study up to level 6.



01254 54659 or email [info@t2000.co.uk](mailto:info@t2000.co.uk)

[www.training2000.co.uk](http://www.training2000.co.uk)

 Twitter @training2000  Like us on Facebook

 Find us on LinkedIn



Part of the  
University of  
Central Lancashire

